



高效高能 · 精于智造  
 High efficiency and high yield

PRODUCTION  
**STRENGTH**

智造实力

品和自动化智造团队由服务行业 20 余年的资深工程师组成，拥有丰富的实践经验和研发制造能力，标准化、精细化、系统化、智能化是公司常规生产模式，不断提升产品质量与交期，能完全满足大客户高标准的需求。

PINHE AUTOMATION manufacturing team is composed of more than 20 years of senior engineers in the service industry, with rich practical experience and R&D and manufacturing capabilities. Standardization, refinement, systematization and intelligence are the company's regular production modes, constantly improving product quality and delivery, which can fully meet the high-standard needs of major customers.

制造技师  
 Manufacturing technician

140<sup>+</sup>人

年产设备  
 Annual production equipment

650<sup>+</sup>台

优秀供应商  
 Excellent supplier

160<sup>+</sup>家







严 选 优 出 · 领 先 品 质  
Strict quality inspection and leading quality

QUALITY  
ASSURANCE

品质保证

**品和自动化**从产品研发、原材料采购、制造、直至包装、配送全程管理控制，确保了产品关键环节的质量控制，让每一台机器得以实现“严选优出、领先品质”。公司建立标准化制造工艺及成品检验制度，拥有专业的质量控制流程及手段，以高于行业标准制造和检验每一台设备。

PINHE AUTOMATION manage and control the whole process from product research and development, raw material procurement, manufacturing, to packaging and distribution, ensuring the quality control of key links of products and enabling each machine to achieve "professional design and precision manufacturing". The company has established a standardized manufacturing process and finished product inspection system, and has professional quality control processes and means to manufacture and inspect each piece of equipment higher than the industry standard.

引进业内领先的核心技术，持续技术创新，为用户提供更好的设备。  
建立业内先进的生产制造工艺和完善的质量检测流程，高质量满足客户需求。  
实现信息化管理体系，可对供应链各个环节溯源和管控。

Introduce the leading core technology in the industry, continue technological innovation, and provide users with better equipment.  
Establish advanced manufacturing technology and perfect quality inspection process in the industry to meet customer demand with high quality.  
Realizing the information management system can trace and control all links in the supply chain.

品牌配件，品质保证！  
Brand accessories, Quality assurance!






INSULATING GLASS  
INTELLIGENT PRODUCTION LINE

中空玻璃 · 智能化生产流水线

60%

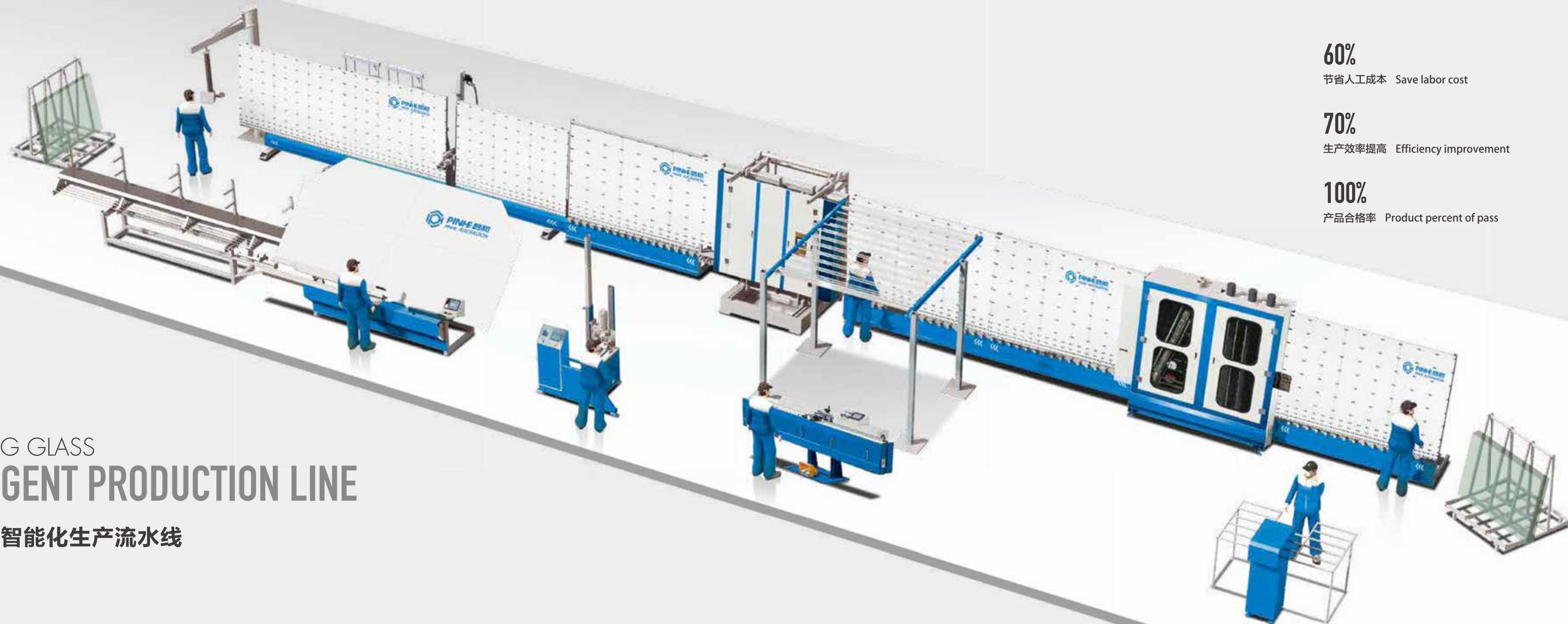
节省人工成本 Save labor cost

70%

生产效率提高 Efficiency improvement

100%

产品合格率 Product percent of pass





# LBG2850/3060

## Automatic Gas-filled Insulating Glass Production Line 中空玻璃自动板外（板内充气）多功能合片生产线

- 双板压结构适合超大片玻璃生产，下充气模式，浓度达到国家标准。
- 拥有内合，外合两套程序，功能全面。
- 全程 PLC 控制系统，触摸屏人机界面。
- 自动识别镀膜玻璃和 LOW- E 玻璃。
- 采用特殊精制真空发生器和吸盘，玻璃吸合效果会更好。
- 可生产二层，三层中空玻璃，大小片（不等边）幕墙中空玻璃及异型中空玻璃。
- 微电脑程序数字化控制生产线、节省劳动等待时间，提高生产效率。
- 压合条用伺服压合，同步带驱动，运行平稳，压合均匀。
- 玻璃托起，大小片定位，跟随密封挡板均采用伺服电机驱动，高效可靠。
- 可根据用户需求定制全横梁输送结构。

- Double-plate pressing structure is suitable for the production of ultra-large glass, and the concentration reaches the national standard under the aeration mode.
- It has two sets of procedures, internal and external, with comprehensive functions.
- Automatic identification of coated glass and LOW- E glass.
- Using special refined vacuum generator and sucker, the glass suction effect will be better.
- It can produce two-layer and three-layer insulating glass, large and small (unequal) curtain wall insulating glass and special-shaped insulating glass.
- The pressing strip is pressed by servo and driven by synchronous belt, which runs smoothly and presses evenly.
- Glass lifting, large and small pieces positioning and following sealing baffle are all driven by servo motor, which is efficient and reliable.
- All-beam conveying structure can be customized according to user's requirements.

技术参数	TECHNICAL PARAMETER	LBG2850	LBG3060
总功率	Total power	70kW	90kW
玻璃最大尺寸	Max. glass size	2800 × 5000mm	3000 × 6000mm
玻璃最小尺寸	Min. glass size	280 × 450mm	280 × 450mm
原片玻璃厚度	Raw glass thickness	3~30mm	3~30mm
中空玻璃厚度	Max. I.G. unit thickness	12~80mm	12~80mm
玻璃清洗速度	Glass washing speed	2~12m/min	2~12m/min
工作速度	Working speed	2~45m/min	2~45m/min
空压机流量（气压）	Air flow (air pressure)	0.8m <sup>3</sup> /min (1MPa)	0.8m <sup>3</sup> /min (1MPa)
水电导率	Water electrical conductivity	≤40 μ s/cm	≤40 μ s/cm
外形尺寸	Overall dimension	30500 × 3200 × 3900mm	42000 × 3200 × 3900mm

| P01-02 |





# LBG2500/2000

## Automatic Gas-filled Insulating Glass Production Line 中空玻璃自动板外（板内充气）多功能合片生产线

- 拥有内合，外合两套程序，功能全面。
  - 全程 PLC 控制系统，触摸屏人机界面。
  - 自动识别镀膜玻璃和 LOW- E 玻璃。
  - 采用特殊精制真空发生器和吸盘，玻璃吸合效果会更好。
  - 可生产二层，三层中空玻璃，大小片（不等边）幕墙中空玻璃及异型中空玻璃。
  - 微电脑程序数字化控制生产线、节省劳动等待时间，提高生产效率。
  - 在线板内充气，下充气模式，浓度达到国家标准。
  - 压合条用伺服压合，同步带驱动，运行平稳，压合均匀。
  - 玻璃托起，大小片定位，跟随密封挡板均采用伺服电机驱动，高效可靠。
- 
- Automatic numerical control insulating glass production line, automatic LOW-E.
  - PLC control, touch sensitive screen man machine interface.
  - Adopt imported vacuum generator and sucker resulted in perfect suction effect to the glass.
  - Produce the Step IG Unit and three Piece IG production according to the customers' different request.
  - Full distance automatic changeable frequency speed adjustment, which can save work waiting time and improve production efficiency.
  - Microcomputer program Digital Control Production Line, save labor waiting time, improve production efficiency.
  - In-board inflatable, under the inflatable curtain, the concentration of national standards. Pressing bar with servo pressing, synchronous belt drive, smooth operation, even pressing.
  - Glass support, size plate positioning, follow the seal baffle are driven by servo motor, efficient and reliable.

技术参数	TECHNICAL PARAMETER	LBG2500	LBG2000
总功率	Total power	46kW	36kW
玻璃最大尺寸	Max. glass size	2500 × 4000mm	2000 × 3000mm
玻璃最小尺寸	Min. glass size	280 × 450mm	280 × 450mm
原片玻璃厚度	Raw glass thickness	3~12mm	3~12mm
中空玻璃厚度	Max. I.G. unit thickness	12~40mm	12~40mm
玻璃清洗速度	Glass washing speed	2~12m/min	2~12m/min
工作速度	Working speed	2~45m/min	2~40m/min
空压机流量（气压）	Air flow (air pressure)	0.8m <sup>3</sup> /min (1MPa)	0.8m <sup>3</sup> /min (1MPa)
水电导率	Water electrical conductivity	≤40 μ s/cm	≤40 μ s/cm
外形尺寸	Overall dimension	25300 × 3200 × 3600mm	21000 × 3000 × 2910mm



可生产大、小片幕墙中空玻璃  
Suitable for stepped units



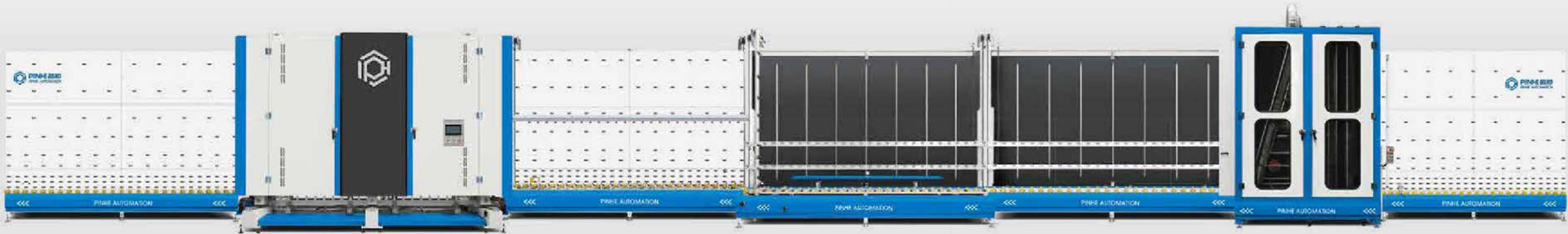
可生产大、小片幕墙中空玻璃  
Suitable for stepped units



半自动 (semiauto)  
Glass MIN 450mm  
生产异形玻璃最小尺寸  
Min.size of special shape units



三层玻璃  
Triple insulating glass





# LBJ2500/2000

## Automatic Flat-pressed Insulating Glass Production Line 中空玻璃自动板外（板内）双功能合片生产线

- 拥有内合，外合两套程序，功能全面。
  - 全程 PLC 控制系统，触摸屏人机界面。
  - 自动识别镀膜玻璃和 LOW- E 玻璃。
  - 采用特殊精制真空发生器和吸盘，玻璃吸合效果会更佳。
  - 可生产二层，三层中空玻璃，大小片（不等边）幕墙中空玻璃及异型中空玻璃。
  - 微电脑程序数字化控制生产线、节省劳动等待时间，提高生产效率。
- 
- Outside and inside assembly program, Comprehensive function.
  - Automatic numerical control insulating glass production line, automatic LOW-E.
  - PLC control. touch sensitive screen man machine interface.
  - Adopt imported vacuum generator and sucker resulted in perfect suction effect to the glass.
  - Produce the Step IG Unit and three Piece IG production according to the customers' different request.
  - The microcomputer digitally controls the production line, saves labor waiting time and improves production efficiency.

技术参数	TECHNICAL PARAMETER	LBJ2500	LBJ2000
总功率	Total power	46kW	33kW
玻璃最大尺寸	Max. glass size	2500 × 4000mm	2000 × 3000mm
玻璃最小尺寸	Min. glass size	280 × 450mm	280 × 450mm
原片玻璃厚度	Raw glass thickness	3~12mm	3~12mm
中空玻璃厚度	Max. I.G. unit thickness	12~40mm	12~40mm
玻璃清洗速度	Glass washing speed	2~12m/min	2~12m/min
工作速度	Working speed	2~45m/min	2~45m/min
空压机流量（气压）	Air flow (air pressure)	0.8m <sup>3</sup> /min (1MPa)	0.8m <sup>3</sup> /min (1MPa)
水电导率	Water electrical conductivity	≤40 μ s/cm	≤40 μ s/cm
外形尺寸	Overall dimension	25300 × 3200 × 3600mm	19700 × 3000 × 3170mm





# ZNJ2850-I / II

# ZNJ3060-I / II

Automatic Insulating Glass CNC Sealing Machine

中空玻璃全自动密封胶线



- 适合大规模玻璃深加工企业使用，降低生产劳动强度、节省人力，提高生产效率。
  - 全智能触摸式人机界面、操作简洁方便。
  - 伺服控制系统采用世界知名品牌，性能稳定。
  - 同步带式传送使玻璃输送平稳，定位精确。
  - 设备关键部件采用特殊材料精制而成，设备操作稳定可靠、使用寿命长。
  - 涂胶后玻璃周边饱满无气线，角部充实，表面平整无需修角。
  - 可配备两套供胶系统，两种密封胶切换快捷，一键式操作。（型号 II）
  - 支持三层玻璃涂胶。
- 
- High sealing performance, High automation, Reduce labor cost, Save manpower cost, improve production efficiency.
  - Fully intelligent and smart HMI in Touching Screen, with memory function and easy operation.
  - Best Sealing quality without air bubbles, smooth surface, avoid time for corner correction!
  - For Model II: Using two sealant supply systems, two fast switch and one-button operation!
  - The width of machine is 1.4m, small floor area, save space.
  - The sections is one production line, it can prestore three pcs glass to improve the efficiency effectively.
  - The smallest insulating glass size can be processed is 300 x 300mm.

- Equipped with anti blocking device in the mixer, easy to clean.
- Servo control system adopts world famous brand, the performance is stable, counting speed is fast, sealant output with high precision, surface with high smoothness.
- Shaft transmission to make the glass being transferred smoothly with accurate positioning.
- Special V type transmission belt to avoid the sealant sticking on the belt, ensure the glass edge clean, V type Block is changeable.
- The spare parts are produced with high standardization and high precision, ensure the machine can be used with long-term stability.
- Suitable for triple glazing.
- Conveying wheel on backboard adopts embedded wheel, to make sure the glass be transported smoothly.
- Equipped with high speed positioning function, glass can be located accurately when transport fast.
- Touch screen adopt ethernet communication, sensitive operation, suitable for popular operation.
- Keep machine service and upgraded timely with our own R&D departments.



技术参数	TECHNICAL PARAMETER	ZNJ2850-I / II	ZNJ3060-I / II
总功率	Total power	10kW	10kW
玻璃最大尺寸	Max. glass size	2800 × 5000mm	3000 × 6000mm
玻璃最小尺寸	Min. glass size	300 × 300mm	300 × 300mm
中空玻璃厚度	Max. I.G. unit thickness	12~56mm	12~56mm
涂胶速度	Coating speed	5~40m/min	5~40m/min
挤胶最大压力	Squeeze pressure	32MPa	32MPa
气源	Air pressure	0.6~0.8MPa	0.6~0.8MPa
外形尺寸	Overall dimension	10300 × 1400 × 3650mm	12300 × 1400 × 3850mm



# ZNJ2540-I / II

## Automatic Insulating Glass CNC Sealing Machine 中空玻璃全自动封胶线



- 适合大规模玻璃深加工企业使用，降低生产劳动强度、节省人力，提高生产效率。
- 全智能触摸式人机界面、操作简洁方便。
- 伺服控制系统采用世界知名品牌，性能稳定。
- 同步带式传送使玻璃输送平稳，定位精确。
- 设备关键部件采用特殊材料精制而成，设备操作稳定可靠、使用寿命长。
- 涂胶后玻璃周边饱满无气线，角部充实，表面平整无需修角。
- 可配备两套供胶系统，两种密封胶切换快捷，一键式操作。（型号 II）
- 支持三层玻璃涂胶。

技术参数	TECHNICAL PARAMETER	ZNJ2540-I / II
总功率	Total power	9.0kW
玻璃最大尺寸	Max. glass size	2500 × 4000mm
玻璃最小尺寸	Min. glass size	300 × 300mm
中空玻璃厚度	Max. I.G. unit thickness	12~56mm
涂胶速度	Coating speed	5~40m/min
挤胶最大压力	Squeeze pressure	32MPa
气源	Air pressure	0.6~0.8MPa
外形尺寸	Overall dimension	8630 × 1400 × 3420mm

- High sealing performance, High automation, Reduce labor cost, Save manpower cost, improve production efficiency.
- Fully intelligent and smart HMI in Touching Screen, with memory function and easy operation.
- Best Sealing quality without air bubbles, smooth surface, avoid time for corner correction!
- For Model II: Using two sealant supply systems, two fast switch and one-button operation!
- The width of machine is 1.4m, small floor area, save space.
- The sections is one production line, it can prestore three pcs glass to improve the efficiency effectively.
- The smallest insulating glass size can be processed is 300 x 300mm.
- Equipped with anti blocking device in the mixer, easy to clean.
- Servo control system adopts world famous brand, the performance is stable, counting speed is fast, sealant output with high precision, surface with high smoothness.
- Shaft transmission to make the glass being transferred smoothly with accurate positioning.
- Special V type transmission belt to avoid the sealant sticking on the belt, ensure the glass edge clean, V type Block is changeable.
- The spare parts are produced with high standardization and high precision, ensure the machine can be used with long-term stability.
- Suitable for triple glazing.
- Conveying wheel on backboard adopts embedded wheel, to make sure the glass be transported smoothly.
- Equipped with high speed positioning function, glass can be located accurately when transport fast.
- Touch screen adopt ethernet communication, sensitive operation, suitable for popular operation.
- Keep machine service and upgraded timely with our own R&D departments.



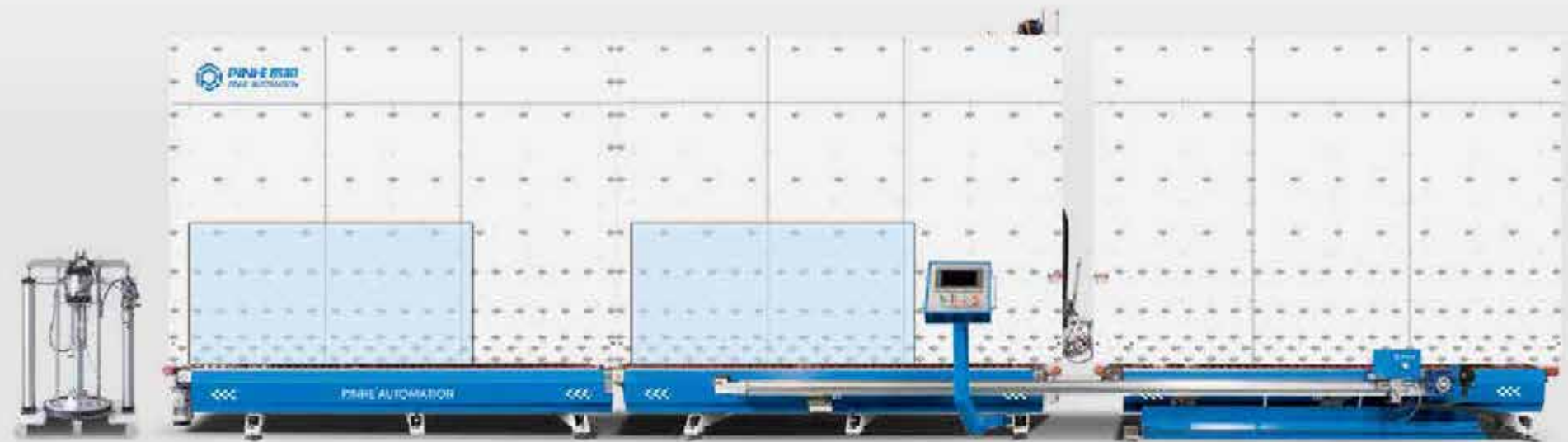
ZNJ2025-I / II  
ZNJ2030-I / II  
ZNJ2535-I / II

Automatic Insulating Glass CNC Sealing Machine  
中空玻璃全自动封胶线



- 适合大规模玻璃深加工企业使用，降低生产劳动强度、节省人力，提高生产效率。
  - 全智能触摸式人机界面、操作简洁方便。
  - 伺服控制系统采用世界知名品牌，性能稳定。
  - 同步带式传送使玻璃输送平稳，定位精确。
  - 设备关键部件采用特殊材料精制而成，设备操作稳定可靠、使用寿命长。
  - 涂胶后玻璃周边饱满无气线，角部充实，表面平整无需修角。
  - 第三段可预存玻璃，实现了流水作业和在线封胶。
  - 可配备两套供胶系统，两种密封胶切换快捷，一键式操作。（型号II）
  - 支持三层玻璃涂胶。
- 
- High sealing performance, High automation, Reduce labor cost, Save manpower cost, improve production efficiency.
  - Fully intelligent and smart HMI in Touching Screen, with memory function and easy operation.
  - Best Sealing quality without air bubbles, smooth surface, avoid time for corner correction!
  - For Model II: Using two sealant supply systems, two fast switch and one-button operation!
  - The width of machine is 1.4m, small floor area, save space.
  - The sections is one production line, it can prestore three pcs glass to improve the efficiency effectively.
  - The smallest insulating glass size can be processed is 300 x 300mm.

- Equipped with anti blocking device in the mixer, easy to clean.
- Servo control system adopts world famous brand, the performance is stable, counting speed is fast, sealant output with high precision, surface with high smoothness.
- Shaft transmission to make the glass being transferred smoothly with accurate positioning.
- Special V type transmission belt to avoid the sealant sticking on the belt, ensure the glass edge clean, V type Block is changeable.
- The spare parts are produced with high standardization and high precision, ensure the machine can be used with long-term stability.
- Suitable for triple glazing.
- Conveying wheel on backboard adopts embedded wheel, to make sure the glass be transported smoothly.
- Equipped with high speed positioning function, glass can be located accurately when transport fast.
- Touch screen adopt ethernet communication, sensitive operation, suitable for popular operation.
- Keep machine service and upgraded timely with our own R&D departments.



技术参数	TECHNICAL PARAMETER	ZNJ2025-I / II	ZNJ2030-I / II	ZNJ2535-I / II
总功率	Total power	7.0kW	7.0kW	9.0kW
玻璃最大尺寸	Max. glass size	2000 × 2500mm	2000 × 3000mm	2500 × 3500mm
玻璃最小尺寸	Min. glass size	300 × 300mm	300 × 300mm	300 × 300mm
中空玻璃厚度	Max. I.G. unit thickness	12~56mm	12~56mm	12~56mm
涂胶速度	Coating speed	5~40m/min	5~40m/min	5~40m/min
挤胶最大压力	Squeeze pressure	32MPa	32MPa	32MPa
气源	Air pressure	0.6~0.8MPa	0.6~0.8MPa	0.6~0.8MPa
外形尺寸	Overall dimension	8030 × 1400 × 2950mm	9530 × 1400 × 2950mm	9530 × 1400 × 3420mm



# LZJ02

## Automatic Aluminum Spacer Bar Bening Machine 铝间隔条全自动折弯机

可定制半自动机型



- 适用于中空玻璃用铝间隔条的折弯。
- PLC 控制系统，触摸屏人机界面，设备操作简单方便。
- 采用数控伺服电机进料系统，数控折弯角度控制系统。
- 四个储料槽，可以分别存放 4 种不同规格的铝条。
- 折弯和切割时自动避让铝条之间连接处，圆弧处，折弯后自动切割。
- 手动操作功能，便于设备的调试和检修。
- 可以折三角、矩型、正五方型、正六边型、圆弧等形状。
- 该机配有标签打印装置，实时在线打印加工信息。

- Suitable for bending aluminum spacers for insulating glass.
- PLC control system, touch screen man-machine interface, simple and convenient equipment operation.
- Adopt CNC servo motor feeding system and CNC bending angle control system.
- Four storage tanks can store four kinds of aluminum bars with different specifications.
- When bending and cutting, the joint and arc between aluminum bars are automatically avoided, and after bending, the aluminum bars are automatically cut.
- Manual operation function, convenient for equipment debugging and maintenance.
- Can be folded into triangle, rectangle, regular pentagon, regular hexagon, arc and other shapes.
- The machine is equipped with a label printing device, which can print processing information online in real time.

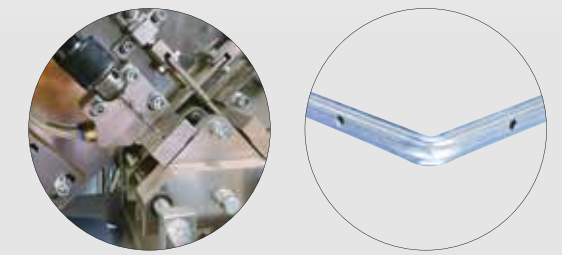
技术参数	TECHNICAL PARAMETER	LZJ02	LZJ03 ( 半自动 )
电源	Power supply	380V/50Hz	380V/50Hz
总功率	Total power	4.0kW	2.0kW
工作压力	Working air pressure	0.7MPa	0.7MPa
铝条规格	Aluminum bar specification	5.5~26.5mm	5.5~26.5mm
最大加工铝框尺寸	Max. aluminum bar size	2000 × 2000mm	2500 × 2500mm
最小加工铝框尺寸	Min. aluminum bar size	300 × 300mm	350 × 350mm
铝条厚度	Aluminium strlp thickness	6.5mm	6.5mm
折弯角度误差	Bending angle error	± 0.3°	± 0.3°
折弯角度	Bending angle	/	90°
折弯速度	Bending spped	<20s/ 个 (1000 × 1000mm)	/
外形尺寸	Overall dimension	10000 × 2200 × 2600mm	4400 × 1600 × 2300mm



# FZS04

## Automatic Double Position Molecular Sieve Filling Machine 双工位分子筛全自动灌装机

可定制半自动机型



- 适用于中空玻璃铝间隔条的打孔及分子筛罐装工序。
- 双工位联动、单动一键切换，节省人工，提升效率。
- PLC 控制系统，人机界面，操作方便。
- 在密闭条件下灌装，解决了干燥剂吸水汽失效，提高效率及中空玻璃寿命。
- 核心控件采用进口品牌。
- 铝条背面中间打孔、灌装、自动封胶。
- 可灌装自动折弯成形铝框和普通直插角铝框。
- 灌装高度可根据铝框大小调节。
- 独特的先进上料装置，可自动补料。
- 本机型可定制圆弧角铝框灌装（例如高铁玻璃）。

- Suitable for punching insulating glass aluminum spacer and filling molecular sieve.
- Double-station linkage, single-action and one-key switching, saving labor and improving efficiency.
- PLC control system, man-machine interface, easy to operate.
- Filling under closed conditions solves the problem of water vapor absorption failure of desiccant, and improves efficiency and service life of insulating glass.
- Imported brands are adopted for core controls.
- Punching, filling and automatic sealing in the middle of the back of aluminum strip.
- Can be filled with automatic bending aluminum frame and ordinary straight angle aluminum frame.
- The filling height can be adjusted according to the size of aluminum frame.
- Unique advanced feeding device can automatically replenish materials.
- This model can be customized for filling with arc angle aluminum frame (such as high-speed rail glass).

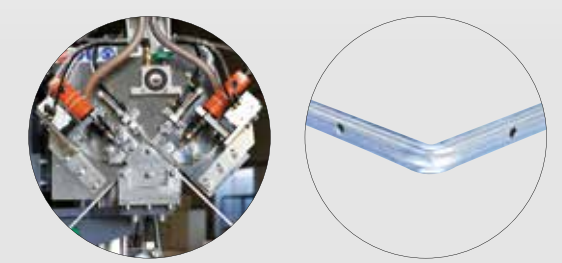
技术参数	TECHNICAL PARAMETER	FZS04	FZS05（半自动）
电源	Power supply	220V/50Hz	220V/50Hz
总功率	Total power	1.6kW	1.6kW
工作压力	Working air pressure	0.5~0.8MPa	0.5~0.8MPa
分子筛流量	Flow control	约 24g/s	约 24g/s
灌装速度	Filling speed	8~12s/ 个 (1m × 1m 9a)	8~12s/ 个 (1m × 1m 9a)
灌装铝框最小尺寸	Min. Aluminum bar size	350 × 350mm	350 × 350mm
灌装铝框最大尺寸	Max. Aluminum bar size	2000 × 2000mm	1800 × 1800mm
铝条最小	Min. Aluminum spacer	6.5 × 6.5mm	6.5 × 6.5mm
铝条最大	Max. Aluminum spacer	6.5 × 34.5mm	6.5 × 34.5mm
分子筛直径	Molecular sieve diameter	0.5~0.8mm	0.5~0.8mm
外形尺寸	Overall dimension	1075 × 1485 × 3600mm	1075 × 1485 × 3600mm





Automatic Molecular Sieve Filling Machine  
分子筛全自动灌装机

可定制半自动机型



- 适用于中空玻璃铝间隔条的打孔及分子筛罐装工序。
- PLC 控制系统，人机界面，操作方便。
- 在密闭条件下灌装，解决了干燥剂吸水汽失效，提高效率及中空玻璃寿命。
- 核心控件采用进口品牌。
- 铝条背面中间打孔、灌装、自动封胶。
- 可灌装自动折弯成形铝框和普通直插角铝框。
- 灌装高度可根据铝框大小调节。
- 独特的先进上料装置，可自动补料。
- 本机型可定制圆弧角铝框灌装（例如高铁玻璃）。

- Suitable for punching insulating glass aluminum spacer and filling molecular sieve.
- PLC control system, man-machine interface, easy to operate.
- Filling under closed conditions solves the problem of water vapor absorption failure of desiccant, and improves efficiency and service life of insulating glass.
- Imported brands are adopted for core controls.
- Punching, filling and automatic sealing in the middle of the back of aluminum strip.
- Can be filled with automatic bending aluminum frame and ordinary straight angle aluminum frame.
- The filling height can be adjusted according to the size of aluminum frame.
- Unique advanced feeding device can automatically replenish materials.
- This model can be customized for filling with arc angle aluminum frame (such as high-speed rail glass).

技术参数	TECHNICAL PARAMETER	FZS02	FZS03 ( 半自动 )
电源	Power supply	220V/50Hz	220V/50Hz
总功率	Total power	1.0kW	1.0kW
工作压力	Working air pressure	0.5~0.8MPa	0.5~0.8MPa
分子筛流量	Flow control	约 24g/s	约 24g/s
灌装速度	Filling speed	8~12s/ 个 (1m × 1m 9a)	8~12s/ 个 (1m × 1m 9a)
灌装铝框最小尺寸	Min. Aluminum bar size	350 × 350mm	350 × 350mm
灌装铝框最大尺寸	Max. Aluminum bar size	2000 × 2000mm	1800 × 1800mm
铝条最小	Min. Aluminum spacer	6.5 × 6.5mm	6.5 × 6.5mm
铝条最大	Max. Aluminum spacer	6.5 × 23.5mm	6.5 × 23.5mm
分子筛直径	Molecular sieve diameter	0.5~0.8mm	0.5~0.8mm
外形尺寸	Overall dimension	900 × 1200 × 3600mm	1000 × 820 × 2900mm



# DJT02/03

## Butyl Sealant Extruder Machine 丁基胶涂布机

可定制半自动机型



- 适用于中空玻璃铝间隔条第一道密封。
- 整体结构模块化，故障率低，易检修。
- 为保持稳定的出胶性能，采用先进的气液增压技术。
- 触摸屏温度控制，精度高，操作简单易行。
- 传送速度 5 档控制功能。
- 胶量实时仪表显示，提前预警。
- 胶嘴宽度可自动感应调节，快速定位。
- 丁基胶装胶量 14KG，加工铝条宽度 4-30mm。
- 油箱自动加油，洁净，省力。

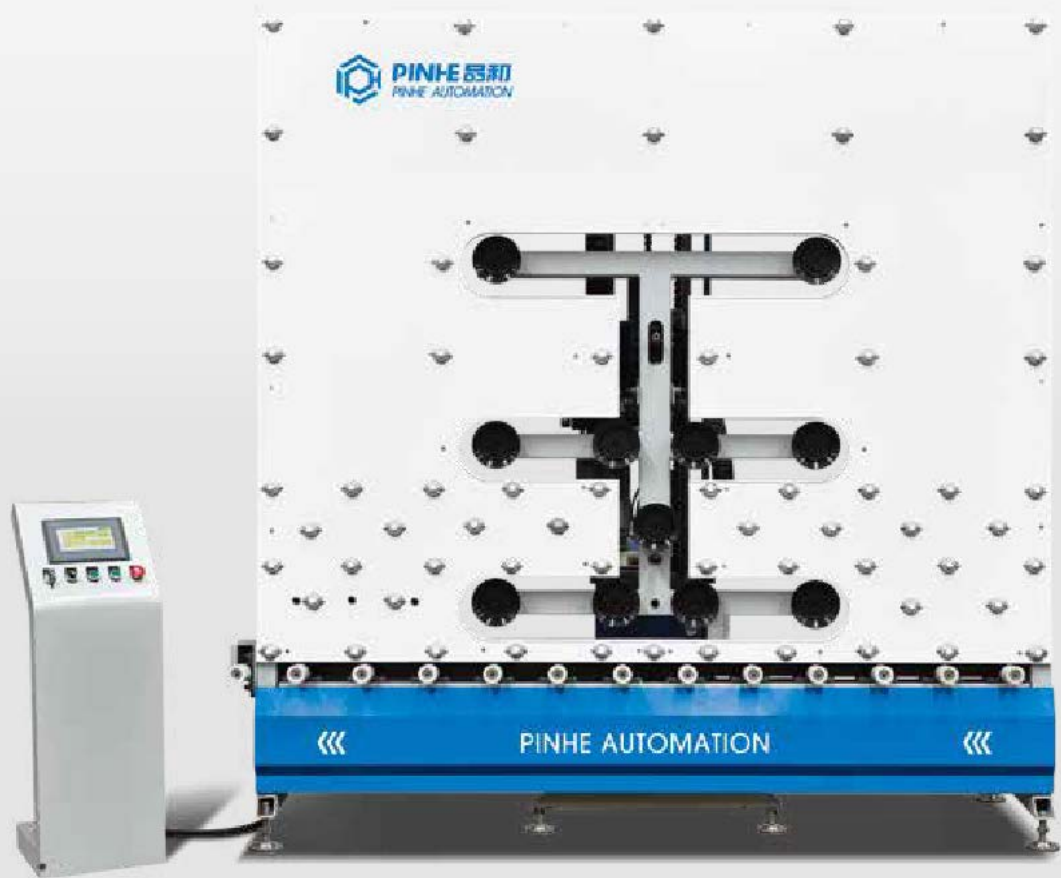
- Suitable for the first seal of insulating glass aluminum spacer.
- The whole structure is modular, with low failure rate and easy maintenance.
- In order to keep the stable glue output performance, advanced gas-liquid pressurization technology is adopted.
- Touch screen temperature control, high precision, simple operation.
- Transmission speed 5-speed control function.
- Real-time instrument display of glue quantity, early warning.
- The width of the rubber nozzle can be automatically adjusted by induction, which can quickly locate.
- The amount of butyl rubber is 14KG, and the width of processed aluminum strip is 4-30mm.
- Automatic refueling of fuel tank is clean and labor-saving.

技术参数	TECHNICAL PARAMETER	DJT02	DJT03 ( 进口马达 )
电源	Power supply	220V/50Hz	220V/50Hz
总功率	Total power	4.0kW	2.6kW
输送速度	Conveying speed	18~40m/min	21m/min/28m/min
打胶温度	Extruding temperature	110~160℃	110~160℃
气动压力	Air pressure	0.5~0.8MPa	0.5~0.8MPa
挤胶压力	Extruding pressure	12~18MPa	12~18MPa
胶头可调范围	Adjustable range of extruding nozzle	6~27mm	6~27mm
加工铝条宽度	Width of machined aluminum strip	4~30mm	4~30mm
胶桶容量	Rubber bucket capacity	14kg	14kg
外形尺寸	Overall dimension	3000 × 700 × 900mm	3000 × 700 × 900mm



# GUM2000/2500/2800

## Vertical Glass Loading / Unloading Machine 全自动立式智能上 / 下片机



- **翻转模式：**采用国内先进的伺服电机翻转，任意角度可停，运行速度稳定可满足 3-12mm 的中空玻璃上片作业。
- **上片角度：**垂直方向 0-15 度可调节，可满足各种角度玻璃上片。
- **吸片深度：**可满足 700mm 以内的上片深度，无需任何辅助架，直接从玻璃架进行上片作业。
- **感应装置：**采用国际品牌感应光电，可有效杜绝因感应失灵导致的安全事故。
- **吸附装置：**吸盘采用先进的双层吸附结构（内外两层），使吸附作业时，吸片更牢固，杜绝了吸盘外层划伤而导致的吸附漏气缺陷。
- **吸盘控制：**每组吸盘均可通过显示屏进行智能化选择开与关，可自由选择吸盘工作数量组，方便各种尺寸的玻璃进行上片吸附作业。
- **提升装置：**设备具有独特的提升程序装置，使玻璃有效分片。
- **操作模式：**设备带有自动模式和手动模式两种功能供选择，操作方便更直观。
- **操作界面：**采用彩色液晶触摸屏显示界面，中文显示模块，操作方便快捷。
- **保护装置：**如遇到玻璃架放置与设备太近时只前伸到一定位置前伸停止，不下降避免下降时与传送轮相撞。设备装有急停开关，可在出现异常时进行设备停止控制。

- **Turnover mode:** the domestic advanced servo motor is used to turn over, which can be stopped at any angle, and the running speed is stable, which can meet the requirement of 3- 12mm insulating glass sheet operation.
- **Loading angle:** adjustable from 0 to 15 degrees in the vertical direction, which can meet the requirements of loading glass frames at various angles.
- **Suction depth:** It can meet the loading depth within 700mm, and can be loaded directly from the glass frame without any auxiliary frame.
- **Sensing device:** the international brand sensing photoelectric device can effectively prevent safety accidents caused by sensing failure.
- **Adsorption device:** the suction cup adopts advanced double-layer adsorption structure (inner and outer layers), which makes the suction sheet firmer during adsorption operation and eliminates the defect of adsorption air leakage caused by scratching the outer layer of the suction cup.
- **Sucker control:** Each group of suckers can be intelligently selected on and off through the display screen, which can be freely selected. The number of suckers is set, which is convenient for glass of various sizes to be adsorbed on the upper sheet.
- **Lifting device:** The equipment has a unique lifting program device, which can effectively prevent glass breakage caused by glass joint.
- **Operation mode:** the equipment has two functions to choose from: automatic mode and manual mode. Easy to operate and more intuitive.
- **Operating interface:** It adopts color LCD touch screen display interface and Chinese display module, which is convenient and quick to operate.
- **Protection device:** If the glass frame is placed too close to the equipment, it only extends forward to a certain position and stops, and does not descend to avoid colliding with the transfer wheel when descending. The equipment is equipped with an emergency stop switch, which can stop the equipment in case of abnormality.

技术参数	TECHNICAL PARAMETER	GUM2000	GUM2500	GUM2800
最大加工尺寸	Max. machining size	2000 × 2500mm	2500 × 3500mm	2800 × 4000mm
最小加工尺寸	Min. machining size	400 × 400mm	400 × 400mm	400 × 400mm
加工玻璃厚度	Thickness of glass	3~12mm	3~12mm	3~12mm
上片载重	Top load	≤250kg	≤300kg	≤300kg
加工速度	Processing speed	14~23s/p	14~23s/p	14~23s/p
传送标高高度	Transfer height	470 ± 100mm	470 ± 100mm	470 ± 100mm
外形尺寸	Overall dimension	2500 × 2300 × 2400mm	3500 × 2300 × 2800mm	4000 × 2300 × 3400mm



# FMJ2000/2500

Full-automatic Film Covering Machine  
全自动立式覆膜机



- 各种参数可调，所有动作均可在 HMI 上实现手动操作并显示实时反馈信息。
- 设备具有双面贴膜和单面贴膜功能。
- 立式设计更节省空间，玻璃垂直到垂直转运更省劲，安全。
- 操作界面 / 调试具有手动，自动及暂停的功能；操作 / 维修二级密码权限（操作人员无法调整参数）。
- 保护膜分层式设计，膜尺寸灵活组合，节省膜的成本。
- 故障报警功能，片数计数功能。
- 滚动刀头切膜，压力自动控制，杜绝划伤玻璃。
- 上料 / 下料处配有急停装置，不可为软急停。
- 进片方向：面对设备正面（有触摸屏的一面）左上右下。
- 带有三边切膜功能，留白宽度范围在 HMI 中单独调试；底部留白在安装膜时预留。
- 控制电柜配置散热风扇。

- Various parameters can be adjusted, and all actions can be manually operated on HMI and real-time feedback information can be displayed.
- The equipment has double-sided and single-sided film pasting functions.
- Vertical design saves more space, and vertical glass transportation saves more energy and is safer.
- Interface/debugging has manual, automatic and pause functions; Operation/maintenance secondary password authority (the operator cannot adjust the parameters).
- Layered design of protective film, flexible combination of film sizes, saving film cost.
- Fault alarm function, piece count function.
- Rolling cutter head cuts film, pressure is automatically controlled, so as to avoid scratching the glass.
- The loading/unloading place is equipped with an emergency stop device, which cannot be a soft emergency stop.
- Film feeding direction: facing the front of the equipment (the side with touch screen), top left, bottom right.
- With trilateral film cutting function, the range of blank width is debugged separately in HMI; The bottom blank space is reserved when installing the membrane.
- The control cabinet is equipped with a cooling fan.

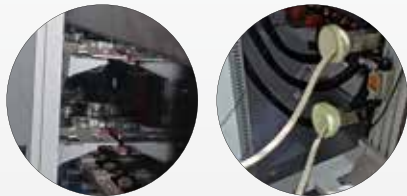


技术参数	TECHNICAL PARAMETER	FMJ2000	FMJ2500
电源	Power supply	380V/50Hz	380V/50Hz
工作压力	Working air pressure	0.5~0.8MPa	0.5~0.8MPa
最小玻璃宽度	Min. glass width	300mm	300mm
最大玻璃高度	Max. glass height	2000mm	2500mm
最小玻璃长度	Min. glass length	600mm	600mm
最大玻璃长度	Max. glass length	5000mm	5000mm
适应玻璃厚度	Adapt to glass thickness	4~50mm	4~50mm
覆膜速度	Film covering speed	4~20m/min( 可调 )	4~20m/min( 可调 )
外形尺寸	Overall dimension	6720 × 1410 × 2890mm	6720 × 1410 × 2890mm



# CP2030/2540

## Cork Pad Paving Machine 软木垫全自动铺贴机



- 适用中空玻璃软木垫铺贴工序。
- 各种参数可调，所有动作均可在 HMI 上实现手动操作并显示实时反馈信息。
- 操作界面 / 调试具有手动、自动及暂停的功能；操作 / 维修二级密码权限（操作人员无法随意调整参数）。
- 设有故障报警功能。
- X 轴水平方向木垫数量可调节。
- Z 轴竖直方向由伺服电机驱动，定位精准。
- Z 轴竖直方向木垫高度自动调节。
- X 轴水平方向由伺服电机驱动，木垫贴放位置均匀美观。
- 设备配有多个料盘，更换操作简单方便。
- 立式设计更节省空间，提高效率，安全生产。
- Suitable for paving process of insulating glass cork cushion.
- Various parameters can be adjusted, and all actions can be manually operated on HMI and real-time feedback information can be displayed.
- The interface/debugging has manual, automatic and pause functions; Operation/maintenance secondary password authority (the operator can't adjust the parameters at will).
- Equipped with fault alarm function.
- The number of wooden mats in the horizontal direction of X axis can be adjusted.
- Automatic adjustment of height of wooden mat in vertical direction of Z axis.
- The horizontal direction of the axis is driven by servo motor, and the wooden pad is placed evenly and beautifully.

技术参数	TECHNICAL PARAMETER	CP2030/2540
电源	Power supply	380V/50Hz
总功率	Total power	3.0kW
加工玻璃高度	Height of processed glass	最小 300mm 最大 2000/2500mm
加工玻璃长度	Length of processed glass	最小 500mm 最大 3000/4000mm
适应玻璃厚度	Suitable glass thickness	4~60mm
传送速度	Conveying speed	4~20m/min ( 可调 adjustable)
外形尺寸	Overall dimension	1000×1500×3500mm



# BST03

## Pneumatic Two Component Silicone Extruder 纯气动双组份涂胶机



- 适用于中空玻璃或门窗幕墙企业大规模批量生产。
- 纯气动控制，使用方便，易操作。
- 主、副马达采用美国先进技术，动力稳定、出胶量大。
- 基料泵、固化剂泵、比例泵一体式结构，杜绝漏胶。
- 基料泵、固化剂泵设有特殊装置，避免泵体空打。
- 比例泵特制单向阀，出胶流畅，适合各种密封胶，彻底解决混胶不匀。
- 多道过滤装置，杜绝杂质进入泵体。
- 国际流行式特制胶枪，搅拌均匀：不锈钢混合芯轴，精密、耐用。
- 单向阀采用高耐磨材料，换向稳定，设备寿命长。
- 旋转臂配有万向装置，灵活轻便。
- Suitable for mass production of insulating glass and curtain walls.Pneumatic control, easy to operate.
- Main and auxiliary motor all adoptAmerican advanced technology, stable power, large sealant output.
- Integrated structure of base material pump, curing agent pump and proportioning pump, avoid leaking sealant.
- Special device in base material pump and curing agent pump, avoid running idle.
- Special check valve in proportioning pump to make the sealant coming out more fluently, suitable for all kinds of sealant,avoid incomplete mixing.
- Multichannel filtering device, eliminate the impurities into the pump body.
- Special glue gun, evenly stirred: stainless steel mixed mandrel, precise and durable.

技术参数	TECHNICAL PARAMETER	BST03
混合比	Mixing ratio	6:1~14:1
基料桶	Material drum	55gallon (200L)
固化剂桶	Curing agent drun	5gallon (20L)
胶气压力比	Glue pressure ratio	50:1
挤胶最大压力	Max. pressure of extruding glue	32MPa
出胶量	Glue output	4~10L/min
外形尺寸	Overall dimension	1750x950x1980mm





# ALD360

Automatic Gantry Structure Loading / Unloading Machine  
龙门式自动上 / 下片机



技术参数	TECHNICAL PARAMETER	ALD360
电源	Power supply	380V/50Hz
总功率	Total power	5.5kW
X 轴工作行程	X- axis working stroke	4000mm
Y 轴工作行程	Y- axis working stroke	5000mm
Z 轴工作行程	Z- axis working stroke	3000mm
抓取玻璃尺寸	Grab glass size	最大 2500 × 4000m  最小 200 × 500mm
抓取重量	Grab weight	360kg( 可定制 Customizable)
外形尺寸	Overall dimension	6300 × 5000 × 4500mm

- 适用于中空玻璃设备，清洗机、磨边机等设备的玻璃上下片取料，可实现多工位下料。
- 采用龙门式结构设计，坚固稳定，X/Y/Z 轴超大行程，超大抓取重量，完全满足超大玻璃加工。
- 采用机械手数字操作系统，操作简单，安全可靠。
- 采用优质真空吸盘，负压值高，吸力足，玻璃吸附牢稳不脱落。
- 可根据客户需求定制行程，抓取玻璃尺寸以及抓取重量。

- Suitable for picking up the upper and lower pieces of glass in insulating glass equipment, cleaning machines, edging machines and other equipment, and can realize multi-station blanking.
- Adopt gantry structure design, firm and stable, X/Y/Z axis super-long stroke, super-large grab weight, fully meet the super-large glass processing.
- The manipulator digital operating system is adopted, which is simple to operate, safe and reliable.
- High-quality vacuum sucker is used, with high negative pressure and sufficient suction, and the glass is firmly adsorbed and does not fall off.
- Can be customized according to customer needs, grab glass size and grab weight.

# SSJ-01

Spacer Transfer Machine  
铝间隔框输送机



# HZT-01

Rotating Table  
旋转涂胶台



# XPJ-300

Glass Unloading Machine  
玻璃下片机



# ZCJ-02

Inter Gas Inflator (Argon)  
中空玻璃充气机

